



金盟國際實業有限公司
Jin Méng International Industry Co., Ltd.



金盟國際實業有限公司
Jin Méng International Industry Co., Ltd.

Factory



New technology, one machine dual use, suitable for hard&soft materials, shoe mold industry application



- 4-8pcs 1:1 sample dummy
- 3 pairs small size ooden dummy
- 6 pairs of Plate casting wooden dummy

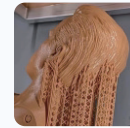


- soft material sample printed can be tried on.
- with shoe last and parts very easier for customer confirm

JIN MENG INTERNATIONAL INDUSTRY CO., LTD
Add:Huifu center 1003# Jinjiang

Michael Chang: +86-15960772629

WhatsApp: +886-933452344



Mannequin



Model



Jewelry



Mold dummy



Movie figures



Dental application

Professional 3D printer

High stability, high detail presentation, high success rate

JM S26

More intelligent, more flexible large desktop 3D printer

- Suitable for shoe mold, head carving and other industries
- structure size(W*D*H):277*156*380mm



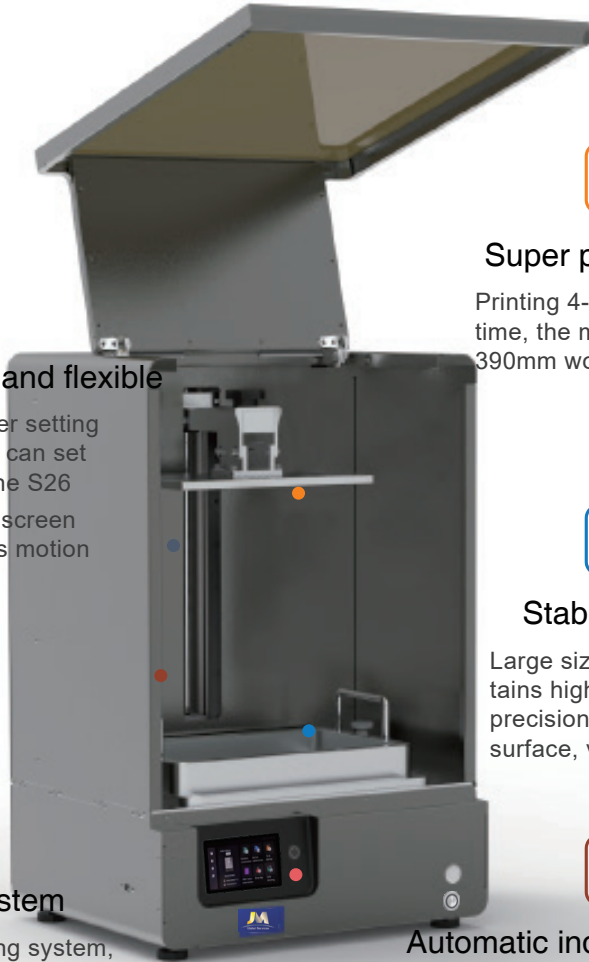
More intelligent and flexible

The device parameter setting is more flexible. You can set the parameters on the S26 5.0-inch color touch screen and adjust the Z-axis motion speed



Dual heating system

With a double heating system, a heating port on the left & right side, so that the heating is more uniform and the success rate is higher in the low temperature environment



Super printing size

Printing 4-8 wood molds at a time, the maximum can print 390mm wood molds



Stable printing

Large size print but maintains high quality, high precision print, consistent surface, very few wrinkle



Automatic induction lighting

Increase the door automatic induction lighting, can see the print room clearly even in Poor lighting environment

**** After testing, The light has no effect on the curing of the resin ****

Professional grade 3D printer technical specifications

Print attribution

JM S26

技術	technology	mSLA technology
光源	Light source	Industrial light source Wavelength 405nm
構造體積	structure	277,848 x 156.06 x 380 mm (10.94 x 6.14 x 14.96 in)
分層厚度 (取決於材料)	The thickness of the layer depends on the material	25-150 um(0.001-0.006 in)
液晶屏幕分辨率	Screen resolution	5448×3064
灰度管理XY像素尺寸	Grayscale management XY pixel size	25.5 um
像素點尺寸	Pixel point size	51 um
打印速度 (取決於材料)	printing speed, depends on material	Max power 60mm/h
材料	material	405nm UV resin

Hardware

JM S26

打印機尺寸	printer size	500 x 420 x 769mm (19.7 x 16.5 x 30.3 in)
淨重	N.W.	58 kg (127.9 lbs)
內部溫度	Internal temperature	Automatic heating to 35 C , automatic heating to 95 F
溫度控制	Temperature control	Air heated printing room
空氣過濾	Air filtration	Built-in activated carbon
操作環境	Operating environment	18 - 28 °C (64 - 82 °F)
光源規格	Light source specification	91 pcs of LED matrix light source 405nm wavelength
連接方式	Connection mode	usb2.0/ Ethernet /WiFi
打印機控制	Printer control	5.0-inch touch screen

**** Internal Temperature : Ambient temperature different, slight variation ****